

SIGN YOUR PETITION

Strathmore

OBSERVER

POST OFFICE BOX 100
MATAWAN, NEW JERSEY

U.S. POSTAGE
PAID
Matawan, N.J.
Permit No. 39

OCCUPANT
19 NOBLE PL
MATAWAN NJ

VOL. II — No. 10

A PUBLICATION OF THE STRATHMORE CIVIC ASSOCIATION

MAY, 1965

Voluntary Water Restrictions Asked By Utilities Authority

During the past few weeks, our water system has been severely overtaxed by excessive lawn sprinkling. So much so that on several occasions our neighbors in the Juniper Park and upper Ivy Hill sections were completely out of water for as long as four or five hours.

In order to assure continuous service for inside-the-house use and also allow for reasonable lawn sprinkling, the Utilities Authority invoked voluntary lawn sprinkling restrictions. Although compliance was generally good, water usage continued to be in excess of the amount the State allows the Authority to pump each day from its wells.

At its meeting on May 26th, the Authority formed a Citizens Committee to recommend revised restrictions. Full details were not known at press time, but the tentative plan set up a schedule for the entire summer which allowed two days per week for each section on a rotating basis.

Several other suggested restrictions were included in notices sent to all the Strathmore residents. All were excellent water conservation measures and should be followed closely.

We are deeply disturbed by the various "gripes" which have been heard con-

cerning the imposition of any restrictions. We would ask that these people compare our situation with that of the residents of Northern New Jersey, where all outdoor water usage has been indefinitely curtailed, subject to as much as a \$200 fine. Also, there are other people who are not fortunate enough to have a central water supply and are now without water because the proverbial well has run dry.

We do not feel that the Authority will ask us to dismiss the investment we have in our lawns and shrubs. It will, however, ask that we use this precious commodity wisely. To this we fully subscribe.

One thorough, deep penetrating soaking per week, provided it does not rain, is both sufficient and desirable because it promotes the growth of deep-rooted grass. Conversely, numerous light waterings promote shallow-rooted grass which allows weeds and the less desirable grasses to flourish.

In conclusion, we would ask that all Strathmore residents conscientiously comply with the Utilities Authority's new "voluntary" restrictions. The consequences for not doing so could be dire.

Association Petition Defeats Town Hall

The Civic Association's petition against the \$242,000 addition to town hall was successful. In spite of the fact that the decision to circulate the petition was made only ten days before bids on the project were due and that the actual distribution of the petitions and solicitation of signatures started only five days before the deadline, the Association was able to present 1,975 signatures to the Township Committee before it acted on the project bids.

The 1,975 signed petitions were presented to the Township Committee just prior to the time limit for the receipt of bids on the various contracts. A few minutes after the deadline, the mayor officially closed the receipt of bids and then made a statement explaining the background of the proposal and the reason for deciding to cancel the project. A

motion was then entertained and unanimously approved which called for the return of all bids to the various companies, unopened. If the bids had been opened and were found to be within the budget, it would have been virtually impossible to then abandon the project because of the possibility of the low bidders bringing suit against the Township.

The architect will receive his full contract fee for the design work which had already been completed. His contract with the Town will remain in effect. The new governing body which will take office in January will have to decide what it wants to do about the need for more space and whether to retain the present architect or to seek alternate solutions.

It is obvious that some temporary measures will have to be taken early

[Continued on Page 4]

ASSOCIATION MEETING

Wednesday, June 9

Regional High School, 8:30 p.m.

Bayshore Community Hospital

Progress Report

Sewer Odor Continues

Despite steps taken by the Utilities Authority to eliminate odors from the sewer treatment plant, residents of Northland Park claim that odors persist, although some improvement has been noted.

About 50 people from Northland voiced strong protests about the odor problem at the Authority's meeting on April 28th. They were promised that a thorough investigation would be made by the Authority's consulting engineer. The investigation was to include a study of the feasibility of enclosing the plant's outdoor portions.

Authority member, Edward Grey, conducted an informal tour of the plant on Saturday morning, May 22, to explain its operation and also to point out what action had already been taken. He stated that the plant's holding and digesting tank was drained and its walls scrubbed down to remove accumulated sediment. He also said that the earth around this tank had been dug out and replaced with gravel and sand. He explained that the tank had overflowed during the winter months, causing the ground to be saturated with sewerage.

Mr. Grey was told that, although the odor problem had become less frequent, it was as bad as it had ever been all day on Tuesday, May 18th. Several suggestions for further improvements were then made. Mr. Grey said he would pass them on to the consulting engineer. He also promised that the Authority would continue its efforts to eliminate all odors in the residential area of Northland Park.

THE STRATHMORE OBSERVER

published monthly by the

**STRATHMORE - AT - MATAWAN
CIVIC ASSOCIATION, Inc.**

Post Office Box 100, Matawan, N. J.

THEODORE ENDRESEN, Pres. 566-8033
EDWARD J. MURPHY, Vice Pres. 566-5570
MARLINE F. EWING, Sec'y. 566-1482
GERARD J. FITZPATRICK, Treas. 566-8477
ROBERT PRATA, Auditor 566-7891

EDITORIAL STAFF

MARLINE EWING BARBARA MURPHY
LUCY P. FORD BARBARA FITZGERALD
GERARD J. FITZPATRICK, Bus. Man.

For Advertising Information
CALL 566-7891

CITIZEN PROTESTS EXCESSIVE SCHOOL BID

by F. M. GILBERT

With the advent of Strathmore, Marc Woods and several garden apartment developments, the Board of Education officially made known a ten-year program to take care of future school housing needs. This enlightened plan called for the construction of four new schools, the acquisition of real estate parcels on which to build, and the renovation of an existing school.

The first phase in the program (1964-1966) was to include:

	target date	estim. cost
1. Renovation of Matawan Grammar School #2 new heating system	1964	\$100,000
2. Renovation of Matawan Grammar School #2 new windows, roof	1965	25,000
3. New construction K-8 school, Lloyd Rd.	1965	1,530,000
4. New construction K-6 school, Ravine Dr. ..	1965	420,000
5. Renovation of Matawan Grammar School #2 new lighting, ceiling	1966	75,000
		<hr/>
		\$2,150,000
6. Land Acquisition School		
	Enrollment	Acres
K-8 Lloyd Rd.	900	30
K-6 Ravine Dr.	350	7.24
K-8 Cliffwood	850	35
K-6 Lloyd Rd.	600	10
High School Addition	200	
		<hr/>
		\$275,000
7. Other Expenses		
Architect and engineer fees		125,000
Legal fees and others		38,700
Contingencies		36,300
		<hr/>
Grand Total		\$2,625,000

In June, 1964, a referendum authorizing a \$2,625,000 bond issue was passed overwhelmingly, greatly helped by the efforts of the Strathmore community. Since then the land acquisition program has been under-way, although the Board attorney has met with many time-consuming obstacles in obtaining title to the desired properties. In the case of the K-6 Ravine Drive School, this not only caused a delay in the opening of the school, but also cost an additional \$15,000 since the school could not be situated in the most desirable part of the property. As of this writing, clear title has not yet been obtained for the final one-third of the plot.

The next tangible evidence of trouble came when the bids for the K-6 school on Ravine Drive in Matawan Borough proved to be 30% above the architect's original estimated costs. The bond issue approved a \$420,000 fully equipped school and we were not pleased at the prospect of a \$539,000 figure, unequipped.

The Educational Committee of the Civic Association presented a list of suggestions and changes to the Board and requested a delay in the acceptance of the bids. The changes would have eliminated some "frills" but in no way would have detracted from the educational facilities of the school.

Despite the Education Committee's efforts at fiscal responsibility, the Board voted 7-1 to accept the initial bids. The only negative vote came from Mr. Feder, the one Strathmore member on the Board. Mr. Feder felt, and I feel justly so, that a delay of a week or two would have allowed the Board to review suggestions from the Education Committee in depth and would have given the public an opportunity to express its opinion. Such a minor delay would not have affected the program to any great degree.

In a few months bids will be accepted on the proposed K-8 school on Lloyd Road and Ivy Hill Drive. The Education Committee is currently reviewing the blueprints and intends to offer detailed comments to the Board.

The taxpayers' money — your money — is involved. As dictated by good business practice, I hope we get the best results for our dollars within the confines outlined in Phase I above.

If costs continue to run materially over estimates, the Board will have to ask for a new referendum to authorize an additional bond issue. Nobody wants to see this happen and, I am sure, the Educational Committee of the Civic Association will do its best to prevent it.

Attention, Homeowners!

An alert Strathmore resident noticed some bubbles on his lawn one evening after a rain. The bubbles came from a relatively minor gas leak in the pipe near the sidewalk. If any member of your household ever smells gas or notices anything unusual such as lawn bubbles, please call the New Jersey Natural Gas Company at once, 264-4114, (nights, weekends, holidays WX-5100 or 774-2424). We have been advised that it is the gas company's policy to repair any reported and found leak immediately. The gas company has scheduled a routine leak survey in Strathmore this month.

Any homeowner constructing an addition to his house which requires excavation work should contact the following utility companies to be sure of not breaking any pipes or wires: New Jersey Natural Gas Company, Jersey Central Power and Light Company, Matawan Township Municipal Utilities Authority and New Jersey Bell Telephone Company.

STRENGTHEN YOUR CIVIC ASSOCIATION

Membership in the Strathmore Civic Association means a strong voice in local community affairs. One person alone could not have stopped the expenditure of over a quarter of a million dollars on an obsolete building program for the Township Hall. A unified Strathmore Civic Association did.

The Civic Association meets once a month during the school year, bringing vital information to Strathmore homeowners. This information is obtained through association members who attend all major meetings in the township.

If you are interested in committee work, the association gives everyone an opportunity to work in his field of interest and/or talent. Standing committees of the association are:

Public Information (THE STRATHMORE OBSERVER), Education, Streets and Safety, Property and Utilities, Recreation, Zoning and Taxation. Where can you help the most?

A year's family membership costs two dollars (\$2.00). To renew your membership in the Strathmore Civic Association call John Driscoll, 566-8770, or send a check for \$2.00 payable to the Strathmore Civic Association. Use the coupon below.

The Strathmore Civic Association

P. O. Box 100
Matawan, New Jersey

Name

Address

Telephone No.

I am interested in committee work

Education Committee Letter Ravine Drive School

May 10, 1965

Mr. John J. Bradley, President
Matawan Regional School Board
Matawan, New Jersey

Dear Sir:

The Education Committee believes that the whole program for construction of the Ravine Drive School should be restudied at this time by the Board of Education, the architects, and a citizen's advisory group. We believe that many economies can be made that would not detract from the educational function of the school. This conclusion has been reached upon restudy of the final building plans following public announcement that the lowest bid has come in 30 per cent above estimate.

It is remembered that the voters of Matawan Regional School District in June, 1964, approved a referendum calling for a ten-room school on Ravine Drive to be produced at an estimated cost of \$420,000, including equipment. Now, not one year later, we are told that the lowest bids come to some \$539,000, not including equipment. Adding desks and necessary equipment would up costs to an estimated \$600,000 — or \$180,000 more than the Board told voters it expected to expend for this school.

The Education Committee believes that the school district's voters are entitled to a full explanation of why this small school should cost us so dear. The Committee is deeply concerned that the district have sufficient funds for all areas of its school expansion program — building, equipping and staffing. And we dare not jeopardize our entire program with such a vast expenditure in the first building phase.

In an endeavor to afford all three phases, in view of what we hear described as constantly rising building costs, we offer the following suggestions for the Board's consideration. It is to be emphasized that the following are merely preliminary expressions deemed necessary because of the wide discrepancy between the original school cost estimates and the current estimates. Since New Jersey State Law prohibits any major contract changes after acceptance of the bids, it is necessary to have the contractors rebid in order to achieve the required savings indicated by our suggestions and others the Board may make. The end view would be to have revised plans prepared for bidding to more closely approximate the original figure of \$420,000 approved by the electorate.

1. Present plans call for a 49'x32' lunch-

room adjacent to a larger all-purpose room that includes a stage. Elimination of the lunchroom and kitchen and kitchen equipment (equipment is itemized at \$11,000) could achieve an estimated saving of \$35,000.

Two additional classrooms shown on the drawing could be incorporated as permanent rooms when revised plans are submitted for rebid. Then there could be a sliding partition between two of the classrooms to provide additional lunchroom space as needed. (The lunchroom is 49'x32, which is slightly smaller than the size of two average classrooms (28'x28').

2. Moving the site of the building to a better location on the plot, we are told, might save in the vicinity of \$15,000.

3. Double boilers are specified and it appears that the boiler size is excessive. It is estimated that to provide either one boiler of the specified size or two boilers, each two-thirds of the specified size, could save some \$7,000.

4. Additional items, some of them listed as alternates in the bid solicitation, might be calculated to save another \$15,000. Among these items we feel the Board could eliminate wood floors in the

[Continued on Page 6]

BIRCH HILL SWIM CLUB

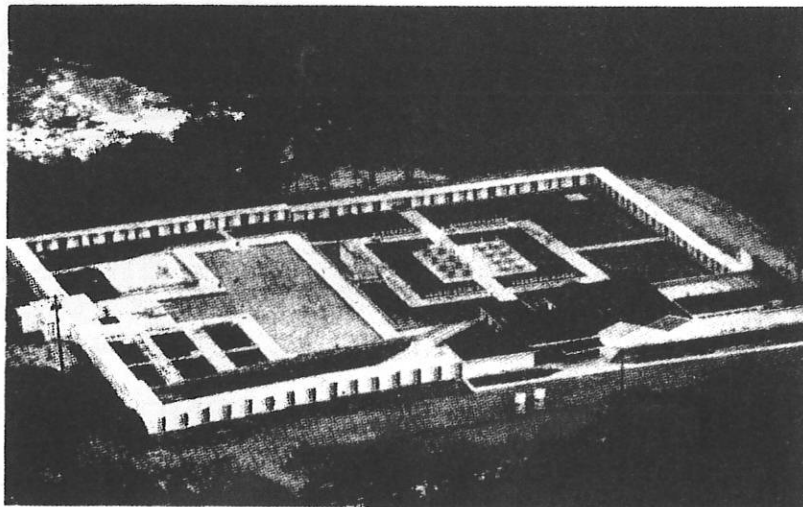
ROUTE 520, MADISON TOWNSHIP

ONLY 10 MINUTES FROM YOUR DOOR

NOW OPEN WEEK - ENDS FOR INSPECTION

FREE!!

- SWIM INSTRUCTION
- TENNIS INSTRUCTION
- MOVIES
- PROFESSIONAL ENTERTAINMENT AND DANCING SAT. NITE
- CERAMICS LESSONS
- ONLY \$150 FOR ENTIRE FAMILY
- BUDGET PLAN AVAILABLE



- TENNIS
- BASKETBALL
- SOFTBALL
- SHUFFLEBOARD
- VOLLEYBALL
- PING-PONG
- PLAYGROUND
- TEENAGE LOUNGE
- PICNIC AREA

For Information
CL 7-8777
CH 6-3344

* * DAY CAMP — 8 - WEEK PROGRAM — RAIN OR SHINE * *

— DIRECTED BY —

JOHN RAGONE, Director of Athletics, New Brunswick High School
RUSS VAN SICKLE, Principal, Madison Park School

DIRECTIONS—Follow Lloyd Rd. to Rt. 79, turn left one block to Tennant Rd.; turn right and follow Tennant Rd. 3½ miles to Rte. 520; turn right on 520 for 1-1/5 miles; cross Rt. 9 and continue for 1/2 mile to Birch Hill entrance.

**HELP WANTED —
MALE AND FEMALE**

Tired of the daily commute? Household chores? We cannot change that for you, but we can offer an exciting and worthwhile outside activity.

The STRATHMORE OBSERVER is looking for informed, civic-minded residents to help on the staff. It doesn't require much time, and we're sure you would enjoy it. Interested? Call Marline Ewing (566-1482) or any of the officers of the Association.

**STRATHMORE PTO
DONATES \$1,000 CHECK**

Mrs. Robert Weiser, retiring president of the Strathmore Elementary School Parent - Teachers Organization, presented a \$1,000 check to Mr. Martin J. Dempsey, principal of the school, this week.

This money will be used for classroom books, reference or otherwise, to be chosen at the discretion of a committee of teachers from each grade level.

Mrs. Weiser expressed her gratitude to all members of the organization who helped make this gift possible.

**Sewer Contractor
Gets 30 Days More**

The contractor of the Cliffwood Beach sewer line project was notified by the Municipal Utilities Authority to complete work by June 7, 1965, or have his contract nullified. Although given this 30-day extension, he has been penalized \$300 per day as provided for in the contract.

This is the second extension given to the contractor, C. J. Pardun and Sons, North Brunswick. It was made on the recommendation of Charles J. Kupper and Associates, the Authority's consulting engineer.

Pardun was advised that his work was unsatisfactory and the project was under-manned and was not adequately equipped. He was also reminded that his contract had originally called for completion in two hundred and ten days (January 7, 1965), but was given an additional one hundred and twenty days (May 7, 1965) to finish.

The authority has stated that if Pardun is not finished by the new deadline, the contract will be cancelled and the remaining work put out for new bids. The cost of such work would be charged to Pardun.

Not only has the contractor not completed the sewer line installation, but the roads are in extremely poor condition as a result.

Association Petitions

[Continued from Page 1]

next year to provide for the additional room necessary for the government and particularly for the police department, which has been told by the state that it must provide additional facilities.

The Association's petition was an overwhelming success. Local residents supported it almost unanimously. The simple mathematics of getting signatures from well over 2,000 residents (counting late returns) out of a possible maximum of about 3,800 in only five days is startling. The collection was organized so rapidly and each volunteer was so limited by the deadline that most were unable to wait or to make return visits when there was no response to the first knock, or when only one person was home. So many people worked hard that it is impossible to give them each individually the credit they well deserve. Each of the volunteers, however, had the satisfaction of seeing the result of his work and knowing that without his efforts the municipal parking lot would probably now be a construction site.

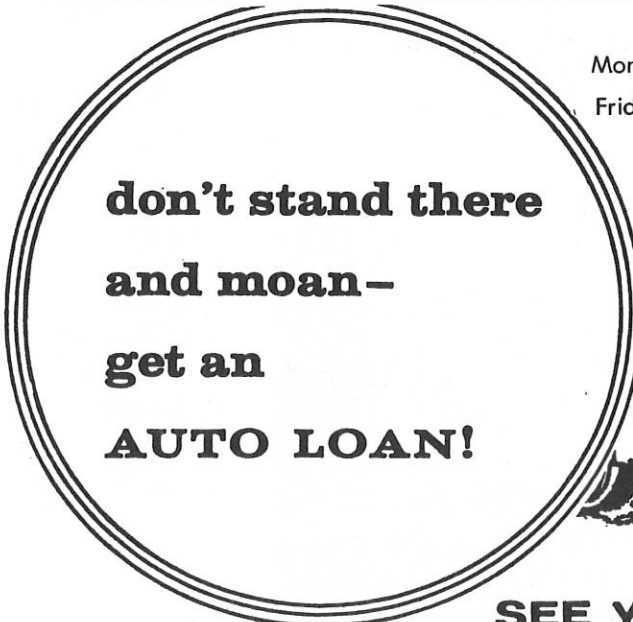
Attention, Organizations

The Community Calendar will be printed next month (space permitting). Please call 566-3165 (Barbara Fitzgerald) for any changes or additions.

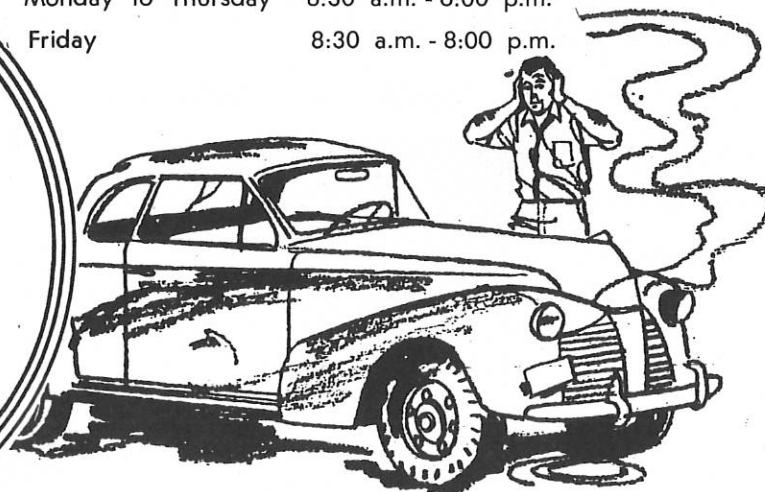
DRIVE - UP HOURS

Monday to Thursday 8:30 a.m. - 6:00 p.m.

Friday 8:30 a.m. - 8:00 p.m.



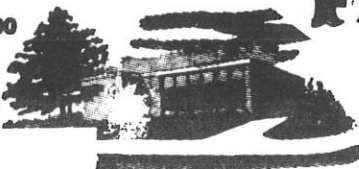
**don't stand there
and moan -
get an
AUTO LOAN!**



**SEE YOUR FRIEND AT THE BANK!
for fast, confidential service**

THREE OFFICES
ROUTE 34 AND
LLOYD ROAD
MAIN STREET AND
RAVINE DRIVE
MATAWAN AND
CLIFFWOOD AVES.

"The Oldest Bank
in Monmouth County"
Established 1830



THE **F**ARMERS & **M**ERCHANTS
NATIONAL BANK
of Matawan

P.I.I.

5th SUCCESSFUL YEAR
EDUCATING AMBITIOUS
STUDENTS . . .

"Your Child Will Be Happy Here"

HILLTOP COUNTRY DAY CAMP

AGES 4 THROUGH 10 - 9 A.M. to 4 P.M.

- Arts ● Crafts ● Many Athletic Activities
- Including Swimming In New Pool
(LOCALLY FREE TRANSPORTATION)

ENROLL NOW FOR JUNE - JULY - AUGUST

MRS. AMY KRAFT, DIRECTOR

SEND FOR
BROCHURE

P.I.I. Summer Academic School

Grades 2 through College Prep — All Subjects
Make-up Courses

SMALL CLASSES —

INDIVIDUAL ATTENTION GUARANTEED
TOP INSTRUCTORS

- Specializing in Reading and Modern Math.
- Class Hours: 9 - 12 noon
- Students may also attend Day Camp
- Mr. Robert Price, Director

Air - Conditioned Building

P.I.I. Kindergarten - Nursery

1965-66 — REGISTRATION AND VISITING
All Schools Information-Consultation (No Obligation)
and Registration

Saturdays 10:00 A.M. - 4:00 P.M.
Week Days 3:00 P.M. - 4:00 P.M.

Call
566-2222

PRIVATE INSTRUCTION INSTITUTE

LLOYD AND NOLAN ROADS, MORGANVILLE
"A STONE'S THROW FROM STRATHMORE"

**The Largest and Most Modern Lanes
In Monmouth County**

FULLY AIR-CONDITIONED

STRATHMORE LANES

HIGHWAY 34

MATAWAN, N. J.

STRATHMORE SHOPPING CENTER

**40 MODERN
AMF LANES**

The Newest Thing in Bowling

**12 Billiard Tables
Nursery and
Meeting Room**



Reservations Now Being Taken for Leagues

Eat at MINDY'S

CATERING • COFFEE SHOP • PRO SHOP
COCKTAIL LOUNGE • RESTAURANT

Open Daily 9 a.m. - ?

Lanes Open Nightly for Bowling



**New KANSEL clears out
16 common lawn weeds**

Look over the list. How many are in your lawn?
New KANSEL gets rid of them ALL!

- DANDELION
- PLANTAIN
- BUCKHORN
- CHICKWEED
- BLACK MEDIC
- CLOVER
- ENGLISH DAISY
- HEAL-ALL



- FILAREE
- HENBIT
- GROUND IVY
- MATCHWEED
- PURSLANE
- SEEDLING KNOTWEED
- SHEPHERDS PURSE
- YELLOW ROCKET

2.95 2,500 sq. ft. • 5.75 5,000 sq. ft.

TURF BUILDER PLUS 2
WEEDS AS IT FEEDS

**TURF BUILDER
plus 2**

Feeds your lawn and
does two other jobs
1. Controls weeds, dandelions, plantain
2. Controls insects, grubs and
other soil pests



3.95 2,500 sq. ft. • 6.95 5,000 sq. ft.

1. Clears out rosette weeds such as dandelion, plantain, buckhorn.
2. Controls vining weeds such as black medic, clover, chickweed.

CERLIONE'S GREENHOUSES

HIGHWAY 35

HOLMDEL, N. J.

(Between Hazlet and Middletown)

YM Teenage Camp To Open June 28th

A Co-ed Teenage Sports Camp will open on Monday, June 28th, at the YMCA's Camp Arrowhead, Marlboro, New Jersey. The camp will be open to all teenagers 13 through 15 years of age or to those having completed 7th grade.

The camp will operate five days a week from Monday through Friday and will close on August 20, 1965. Four two-week periods are scheduled as follows: 1st period June 28 - July 9; 2nd period July 12 - July 23; 3rd period July 26 - August 6, and 4th period August 9 - August 20. Youths may register for any or all periods or a week at a time if desired.

Program activities that will be available for the teenagers are daily swimming at the Camp Arrowhead pool, golf instructions, tennis instructions, softball, marksmanship, riflery, educational and recreational trips desired by the campers, ocean swimming and picnics, camping, both local and away areas, hiking, evening activities such as picnics, swim parties, camp fire activities and special family night programs, club activities and many more.

Program philosophy is based around the development of leadership skills by encouraging club organization. This will permit the camp members to select their own programs under experienced, qualified YMCA leadership. "Chips" Fosgate, Camp Director, states that practically any program is possible . . . from hiking the Appalachian trail to holding group discussions at camp.

The camp will operate its own fully insured bus for all camp programs. The bus will leave the Community YMCA, Red Bank, N. J., at 8:45 a.m. each morning and will return at 4:55 p.m. Any changes in bus schedule times because of program variation will be announced. The Sports Special bus will also stop at the STRATHMORE SWIM AND TENNIS CLUB.

Registration may be made by mail or in person either at the community YMCA, Red Bank, N.J., or at Camp Arrowhead, located off Route 520, Marlboro, N. J. Camp registration forms and brochures may be obtained by calling 946-4598 or 741-2504.

A special Orientation Night will be held June 10 from 7:30 to 8:30 p.m. at Camp Arrowhead. The Camp Director, Mr. Chips Fosgate, and Assistant Camp Director, Mrs. Bruce Johnson, will be on hand to explain more about the camp and to answer any questions.

SEE HOW MATAWAN TICKS. ATTEND A TOWNSHIP COMMITTEE MEETING — HELD EVERY FIRST AND THIRD MONDAY AT 8:00. TOWN HALL, LOWER MAIN ST.

AID SQUAD ASKS FOR HELP

The Matawan Township First Aid and Rescue Squad today appealed to the residents of Matawan Township to help them reduce the number of non-emergency ambulance transports. According to Frank Bertulis, Captain of the Squad, the members of the squad, with a few exceptions, all work during the daylight hours on weekdays. The few men available to answer day calls cannot possibly function for the good and welfare of the township insofar as first aid emergencies are concerned, which is often a matter of life and death, when they are overburdened by non-emergency transports.

Because of this, Captain Bertulis explained, the squad will provide non-emergency ambulance service for bed-ridden patients only, on the request of their doctors to and from homes, doctors' offices, hospitals and nursing homes. Further, because of the shortage of day men, the squad appeals to all to limit requests for this type of service to Saturday and Sunday or after 7 p.m. on weekdays.

However, Captain Bertulis assured the township residents that emergency first aid and rescue calls will be answered any time of day or night.

CLASSIFIED ADS

CLASSIFIED RATES:

TWO DOLLARS (\$2.00) FOR TWO LINES.
(APPROXIMATELY TEN TO TWELVE WORDS)

CAR POOL: From Matawan to South Street Area in Newark. Call Jim, 566-9035.

Possible Shock Hazard

This article applies only to houses with two-prong electrical outlets. These are the houses in the Old Ivy Hill, Andover and Deerfield Park sections.

In 1962 the electrical code did not require grounding of the metal boxes, enclosing electrical outlets and switches except in certain cases such as the laundry room. In order to prevent a possible shock hazard from developing, the faceplates on outlets and switches and the screws attaching these faceplates should be of a non-conducting material.

Mr. Hurwitz of Levitt & Sons has made available to the Civic Association a quantity of plastic screws similar to the ones originally supplied in the house. Anyone wishing to obtain some of these screws should address a letter to:

Property and Utilities Committee
Strathmore Civic Association
P. O. Box 100
Matawan, New Jersey 07747

Please enclose a stamped, self-addressed envelope and indicate the number of screws you need.

Education Letter

[Continued from Page 3]

all-purpose room, and substitute vinyl-asbestos; eliminate sinks in the classrooms other than kindergarten; eliminate a canopy that is called for; and eliminate carpeting and wood panelling that is proposed for principal's office and conference rooms.

In addition to the \$72,000 in savings that might be produced by the above, it is felt that there are additional items which might be charged or material substitutions made. Further study, in our opinion, could result in a more economic, yet equally functional school.

Cordially,

LOIS A. FORMAN
Chairman, Education Committee

First Aid Fund Drive To Begin June 26th

Bob Martinek, chairman of the First Aid Squad annual fund drive, has announced that all homes in the township will receive a coin card the first week in June. Along with the coin card there will be a fact sheet which will contain first aid tips on what to do while waiting for an ambulance or doctor, procedure on non-emergency transports and a complete counterdose chart on poisons and overdoses. All are urged to read this fact sheet and keep it in either the medicine chest or phone book so that it can be easily found when an emergency arises.

The coin cards will be collected by uniformed members of the squad beginning June 26 through July 31. Since this is a job which requires many hours of work on the part of the squad members, it would be a great help to them if you would have your donation ready during this period. The goal, which was 3/4 fulfilled last year, will again be \$10,000. You may see the progress by watching the fund drive barometer on Church St. and Lloyd Road. Remember! The service and equipment that is available is dependent on you.

Membership Open In Baby-Sitting Pool

The Strathmore Baby-Sitting Pool is now accepting membership from mothers residing in any of the sections of Strathmore. The purpose of the baby-sitting pool shall be to provide convenient and reliable sitters for participating members.

Meetings are bi-monthly in member homes. The pool has active members from the Cambridge, Ivy Hill, Deerfield and Northland sections.

For more information on membership applications telephone Mrs. Laura Grossman (566-7527).

BOB'S ATLANTIC

COMPLETE CAR SERVICE — ROAD SERVICE

PICK - UP and DELIVERY

Brake Service • Muffler and Pipe Service

Automatic Transmission Work

Tune - Up and Reverse Flushing

PLAID STAMPS GIVEN

PHONE: 566 - 9830

HIGHWAY 34 and LLOYD ROAD Strathmore Area
Across from 7 - 11 Store Matawan Twp.

— A T L A S —

TIRES - BATTERIES - ACCESSORIES



TONY FARINA'S MATAWAN CHEVRON

HIGHWAY 34 MATAWAN, N. J.

(Next to Strathmore Lanes)

Telephone: 566 - 9850

CAR WASHING

MINOR REPAIRS

ROAD SERVICE

Happy Time Day Camp

FREEHOLD, NEW JERSEY

BOYS AND GIRLS — AGES 3½ - 14

12th Season — June 28th - August 27th

Daily Swimming Lessons in Large, Filtered Pool

Arts and Crafts Program

Archery • Overnight Camping • Hikes

Camp Trips, etc.

TRANSPORTATION PROVIDED

WEEKLY REGISTRATION REASONABLE RATES

Open for Inspection Every Weekend Starting May 1st
Between 1:00 - 4:00 p.m.

CHARLES A. NELSON, Director
Member of Freehold Regional High School Faculty

462 - 2733 PHONES 462 - 2085

SUMMER IS HERE!

Has Your Air-Conditioner Been Checked?

Spring Checks at Nominal Prices

COMPLETE INVENTORY OF PARTS

STRATHMORE AIR - CONDITIONING CO.

AIR - CONDITIONING

HEATING AND PLUMBING

Sales and Service

566 - 5700

65,456 OF YOUR NEIGHBORS, MORE THAN EVER BEFORE, SAY:



Let our specialists advise you on your banking needs

THE **CENTRAL JERSEY BANK** AND TRUST COMPANY



ALLENHURST · ALLENTOWN · BRADLEY BEACH · EATONTOWN · FARMINGDALE
 FORT MONMOUTH · FREEHOLD (2) · FREEHOLD TOWNSHIP · LONG BRANCH
 MARLBORO · MATAWAN · NEPTUNE CITY · SHREWSBURY · SPRING LAKE HEIGHTS

Member Federal Deposit Insurance Corporation